



Public Health
Prevent. Promote. Protect.

Tuscarawas County Public Health COVID-19 Mandatory Event Plan Review

<p>Name of Event YMCA Basketball Recreational Games</p>	<p>Location Tuscarawas County YMCA</p>
<p>Person-in-Charge Contact Info</p> <p>Program: Jason Eick (P) 330.364.5511 x320 (F) 330.364.6291 (W) www.tuscymca.org (E) jason@tuscymca.org</p> <p>Site: Tiffany Foxx, CEO TUSCARAWAS COUNTY YMCA 600 Monroe St., Dover, OH 44622 (P) 330.364.5511 x304 (F) 330.364.6291 (W) www.tuscymca.org (E) tiffany@tuscymca.org</p>	<p>Date of Event</p> <p>Recreational Program will be on going Starting ASAP During Hours of Operation</p>

NOTICE

There is a state of emergency in Ohio due to the prevalence of COVID-19. Pursuant to Ohio Revised Code 3701.13, the Ohio Director of Health has issued several public health orders. **If a venue cannot comply with these orders, they are to work with Local Health Department to resolve any issues.**

REQUIRED ITEMS TO SUBMIT:

- Site Plan
(ATTACHED or visible online at [https://tuscymca.org/uploads/editor/files/Social%20Responsibility/Covid Response Map Sports Main%20Gym.pdf](https://tuscymca.org/uploads/editor/files/Social%20Responsibility/Covid%20Response%20Map%20Sports%20Main%20Gym.pdf))
 - Marked points of entry and exit (Marked with Arrows on Map)
 - Marked hand hygiene stations (Marked by Yellow Circles on Map)
- Your written plan for each of your venues (ex. Football stadium, basketball court, volleyball court, cross country course) (must follow all state mandate/orders)
<https://tuscymca.org/uploads/editor/files/Social%20Responsibility/Basketball%20COVID%20Procedures%20for%20Health%20Department.pdf>

MANDATORY REQUIREMENTS FOR ALL EVENTS

- Social Distancing requirements for sports
 - Designated 6 ft markings on bleachers. Signs posted at Main Gym Entrance and by seating area. Social Distancing requirements also posted on Lobby Bulletin Boards.
 - Hand Sanitizer Wall Dispenser available at each entrance and exit. Additional dispensers in lobby and hallways.
 - Posting of Facility Hours is online at www.tuscymca.org . Program Schedule is also available online. Restrooms/Locker Rooms clearly marked on Wall Signage.
- Enforcement
 - Designated Compliance Officer for Program: Jason Eick / Tuscarawas County YMCA Health & Wellness Director (P) 330.364.5511 x320 (E) jason@tuscymca.org
- Player, Coaches, Trainers and Officials
 - All who enter the building must conduct a self-assessment upon entering the YMCA building. Signs are posted at all entrances to the main facility and at the gym doors.
 - Any player showing signs or symptoms of Covid-19 are not allowed to enter the YMCA.
 - YMCA members have been educated on Covid-19 through Membership Email Correspondence and by signage posted on Gym Lobby Bulletin Boards. Additional information will be provided at location of sign in.
 - This program has players only. No coaches, trainers or officials are used in this program. Players are advised to wear Masks when not participating on the court. All members are advised to wear Masks in all common areas when not participating in exercise. No congregating before or after practice/game.
 - Members have been notified via email, Covid-19 protocol is posted on our website, and by signage to keep social distancing of 6 ft.
 - YMCA Staff and Director on Duty will monitor social distancing.
 - YMCA Program Staff have been trained in Emergency Procedures and Covid protocols.
- Spectators
 - This is a recreational activity. By standers will be encouraged to wear a Mask when not participating. All YMCA Members are required to do a self-assessment prior to entering facility.
- Practice/Game/Tournaments
 - Recreational Play Only. Not an organized league. YMCA Members Only.
 - Players, coaches, trainers, and officials should not physically contact each other except for play.
 - No team shall play against more than a single opponent in a 24-hour period
 - Do not share drinks, food, towels, or facial coverings
- Sports Facilities
 - Compliance Officer: Jason Eick
 - Restrooms/Locker Rooms signage displayed for social distancing and masks.
 - Comply with all requirements for cleaning and time between usage.
- Travel and busing
 - No travel or busing. Recreational Play only. Members Only.

- Suspected and Confirmed Cases
 - This is an Adult Program. Any Member experiencing symptoms will be asked to exit the facility immediately and seek medical attention. After confirmed case. The YMCA will provide the Health Department with contact information of all players present during time of exposure.
 - Players, coaches, trainers, and officials must comply with Local Health Department (LHD) and aid them.
 - Players, coaches, trainers, and officials must comply with isolation and quarantine requirements from LHD
 - Players, coaches, trainers, and officials must maintain records of symptom checks and travel

- Limitation on Spectators at Venues
 - Recreational Play only. No spectators present.
 - All players are asked to enter and exit at designated doorways for proper one-way traffic flow. Signage is posted.

- Signage and Education
 - Posted online under Covid-Response <https://tuscymca.org/covid-19-response>
 - Covid Protocol Materials posted Main Lobby bulletin boards and Gym Lobby bulletin board as well as in locker rooms and restrooms.

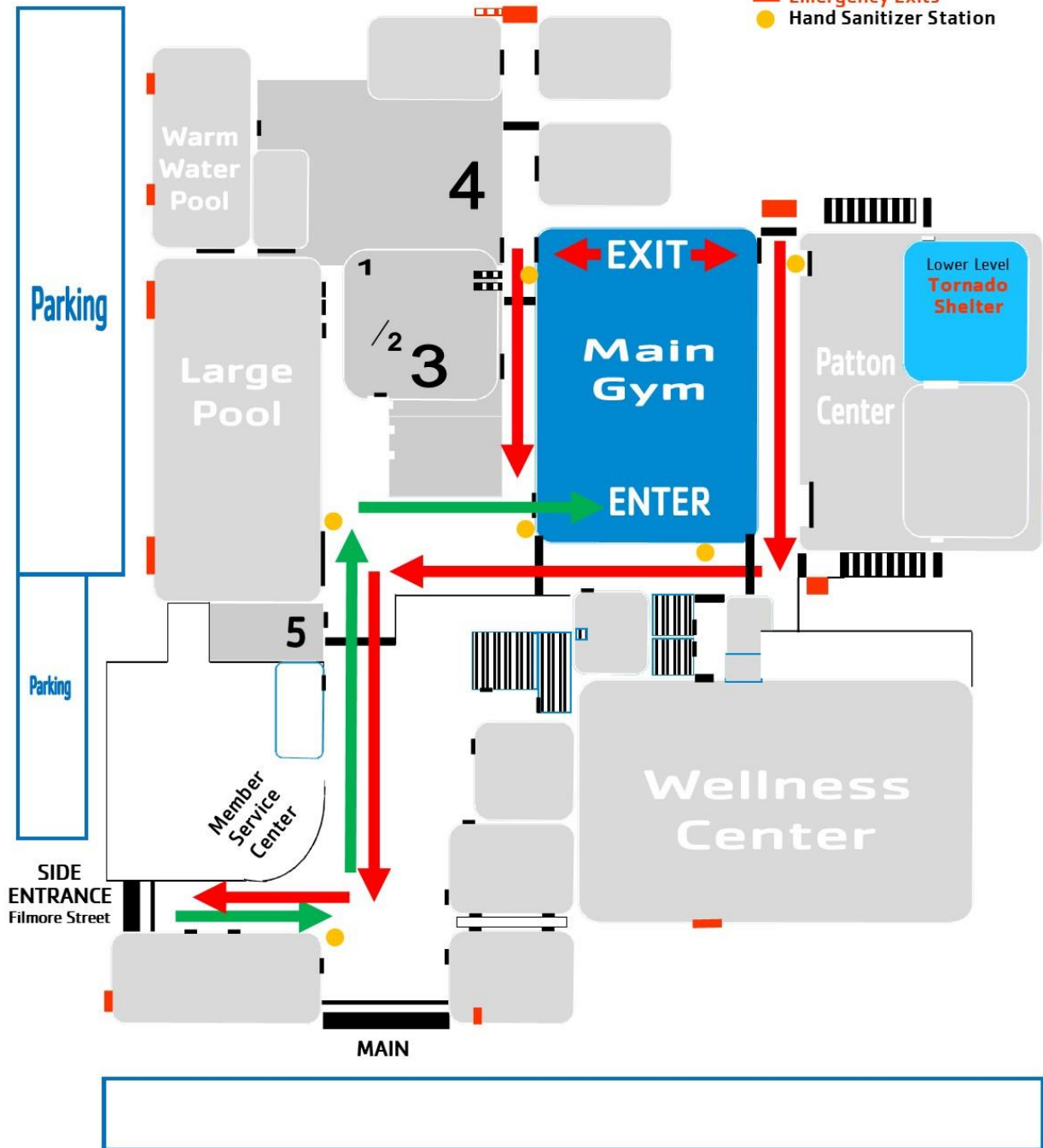
- Sick/Symptomatic People
 - All Members are required to do a self-assessment upon entrance to the Y.
 - Any Member showing signs/symptoms of Covid-19 will be asked to exit the facility immediately and seek medical attention.

- Concession
 - No concession stand.



MAP KEY

- Stairs
- Locker Rooms
 1. Men's - Upper Level
 2. Boy's - Lower Level
 3. Women's
 4. Girl's
 5. Family Dressing Area & Special Needs Locker Room
- ▨ Restrooms Ground Floor
- Office Areas / Storage Areas
- Emergency Exits
- Hand Sanitizer Station



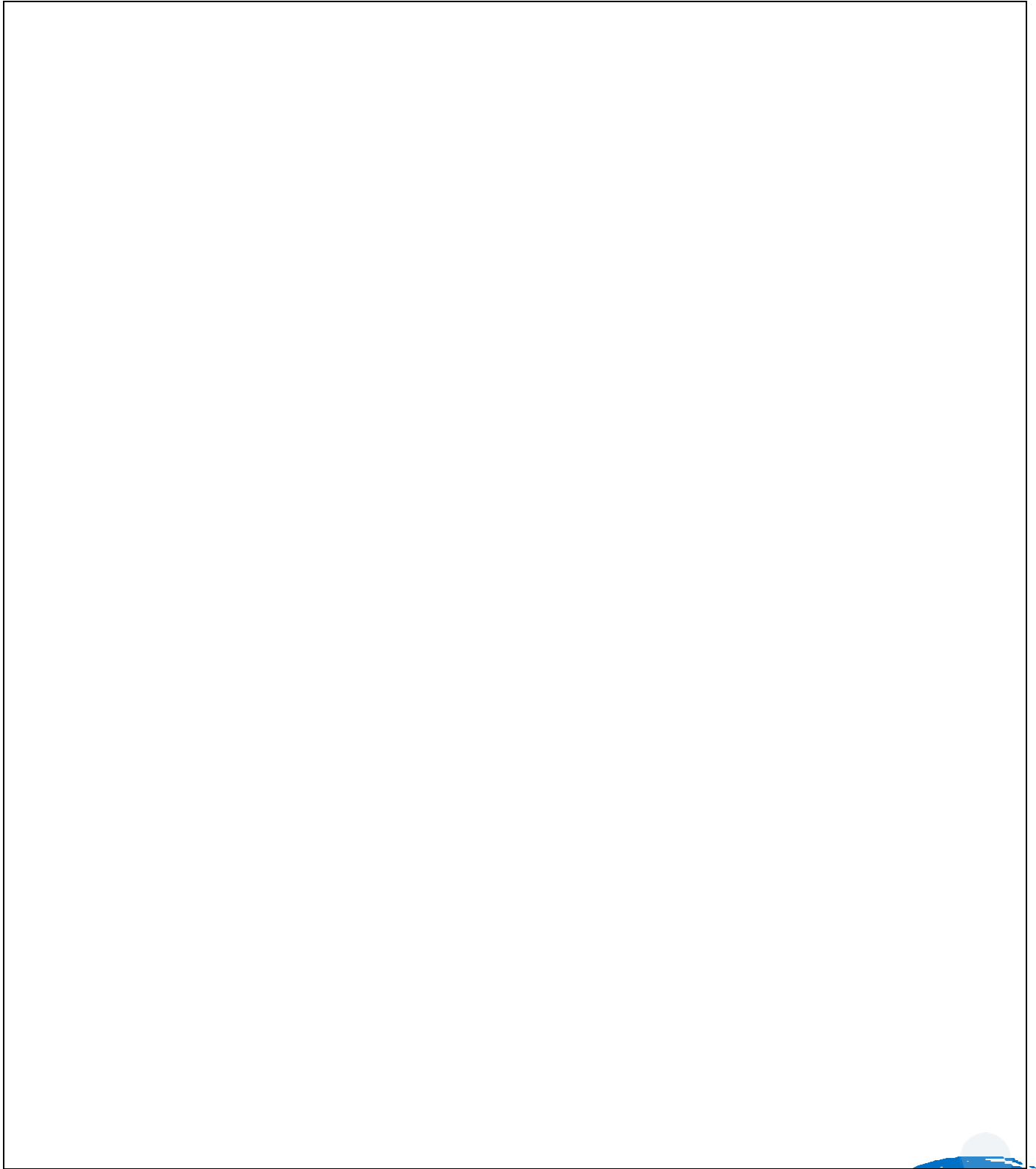
Public Health Orders

<https://coronavirus.ohio.gov/wps/portal/gov/covid-19/resources/public-health-orders/>

Sector Specific Requirements

<https://coronavirus.ohio.gov/wps/portal/gov/covid-19/responsible-restart-ohio/Sector-Specific-Operating-Requirements/>

MANDATORY EVENT PLAN REVIEW- SITE PLAN



ADMINISTRATIVE USE ONLY

Comments:

Submitted by (print name)	Signature
Received by (print name)	Signature

